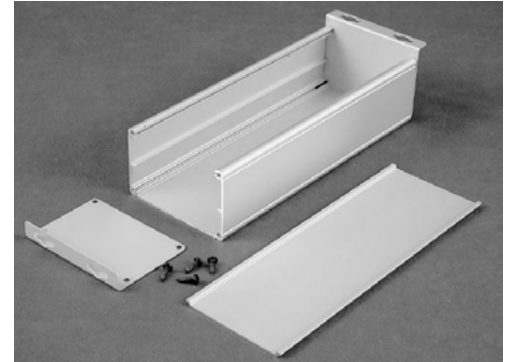
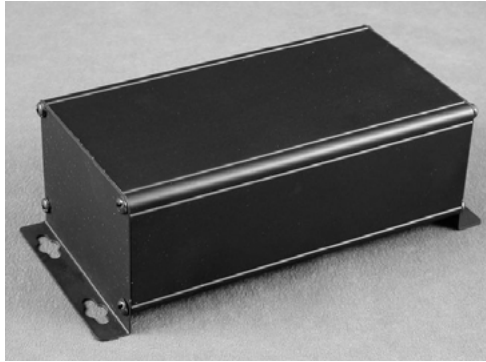
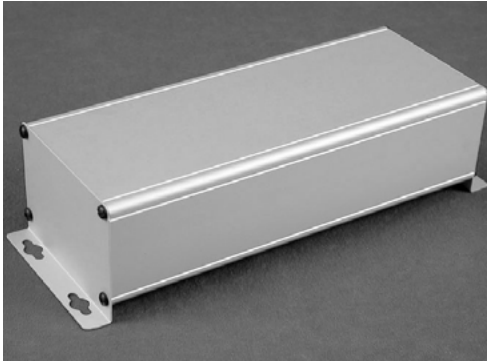


Wallmount Extruded Aluminum Enclosures - 1455 ZT Series

Designed to house electronics for equipment interfacing where shelf or wall mounting is required.

- Consists of an aluminum “U” shaped extrusion body and a slide-in flat aluminum bottom plate.
- Slide-in plate perfect for easy mounting of components.
- Steel foot “L” brackets are attached to each end. “L” brackets are punched with 0.31” (7.9 mm) diameter keyholes for easy mounting of enclosure.
- Rugged body constructed from extruded aluminum with a minimum thickness of .06” (1.5 mm).
- Available in either clear or black anodized finish, the bottom slide-in plate is finished to match.
- The two end “L” brackets are matched to the enclosure.
- Includes all assembly hardware.
- NOTE: Recommended screw torque is 5 lbf/in



Part Number	Anodized Color	Overall Enclosure Dimensions		
		Length	Width	Height
26-1455ZT1601	Clear	160	88.9	56
26-1455ZT1601BK	Black	160	88.9	56
26-1455ZT2201	Clear	220	88.9	56
26-1455ZT2201BK	Black	220	88.9	56